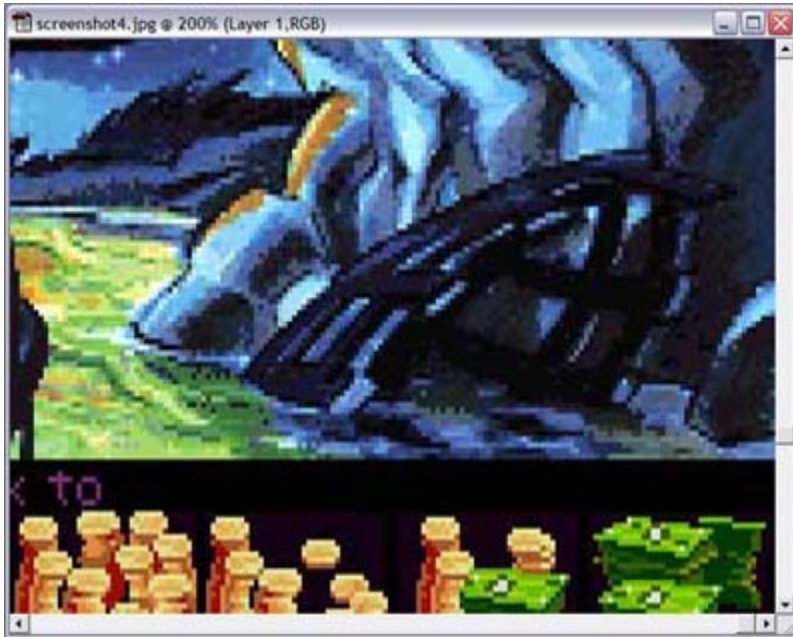


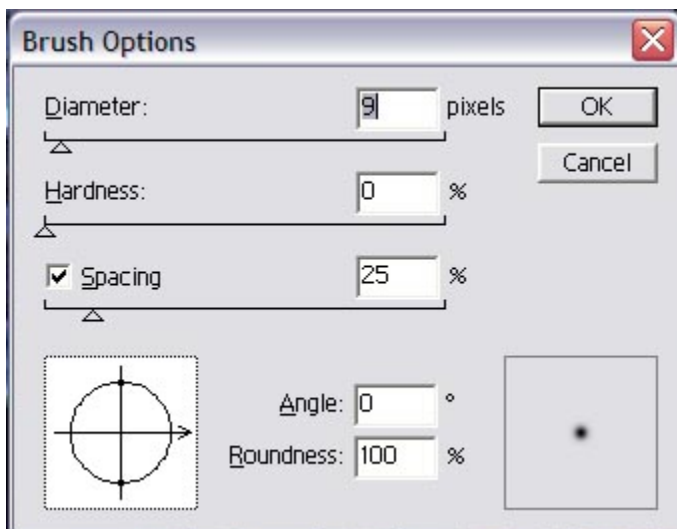
AGS forum member – “Ghost”

Here's a tiny tutorial on what exactly I did to smudge the way I did.

To start off, I'm using Photoshop 5.0, any versions is okay because we're only using the smudge tool.



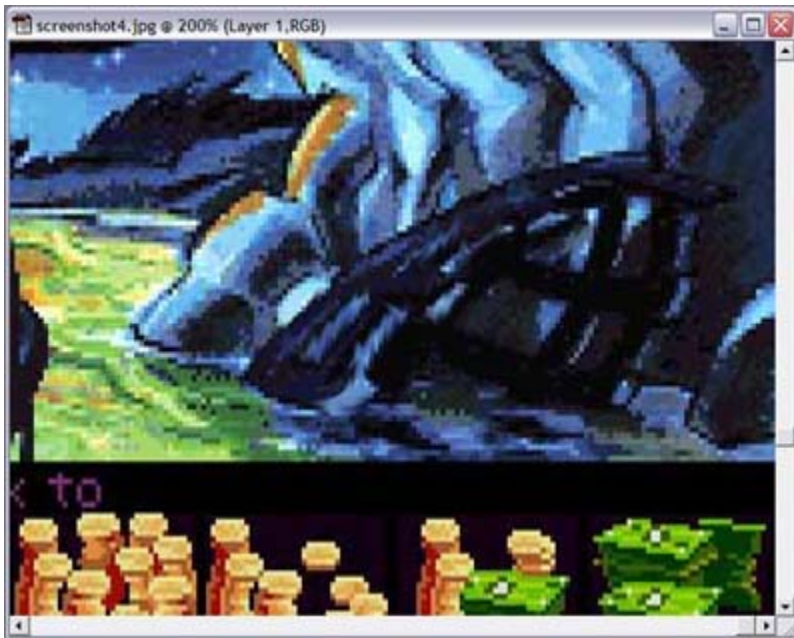
Here's a selected area from a Monkey Island scene.



I picked brush size 9 because it's small enough to keep your details intact and big enough to get rid of those nasty pixels.



Make sure to brush along the lines and shape of your background or else it might end up like this...



Notice the erratic vertical lines along the outer edge of the once-boat.





And after a lot of smudging, here is the finished shot:

